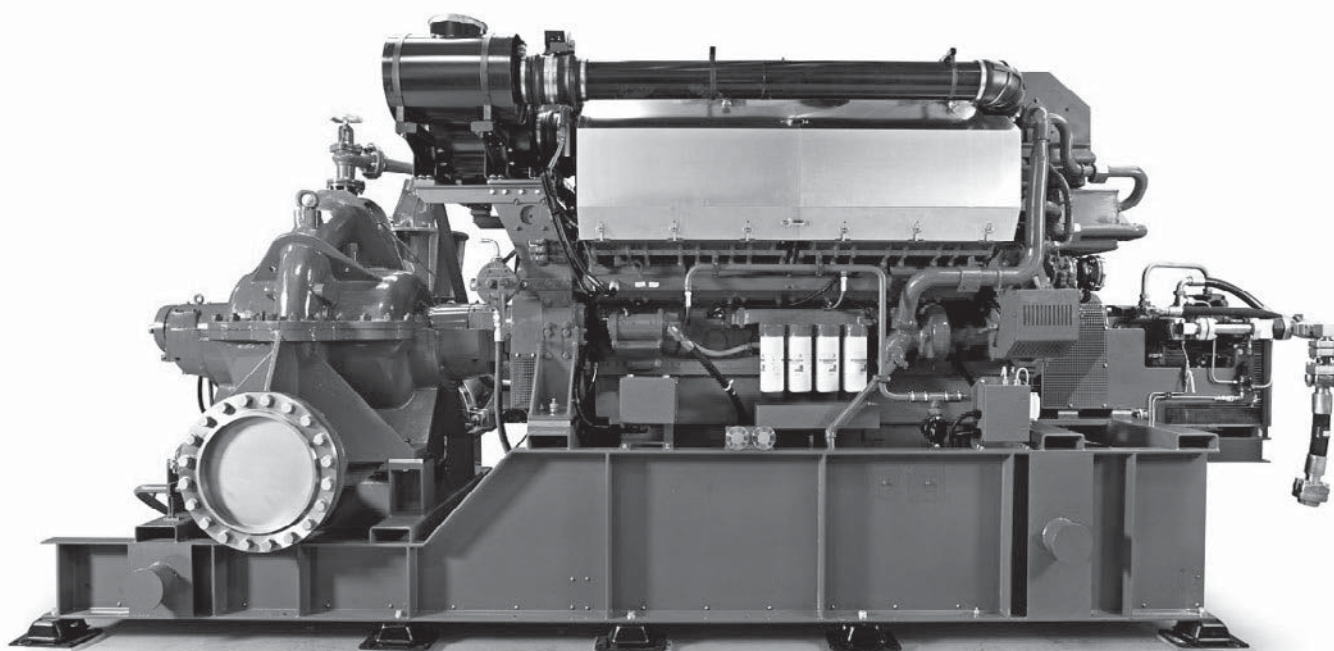


## Productsheet: Diesel Fire Pump

**Capacity: 2200 m<sup>3</sup>/h to 3000 m<sup>3</sup>/h at 120 mWC**



At IRON Pump, we do not have a product-line for our Ellehammer Fire Water Pumps. Every pump is constructed specifically for the buyers needs.

The pump shown here is a large Diesel Fire Pump system. The maximum capacity is 3000 m<sup>3</sup>/h at 120 mWC. This system is suited for large vessels , such as FPSO, FLNG and for semisubs.

### BENEFITS

There is not a single vessel at sea that we cannot equip with an Ellehammer Fire Water Pump.

An IRON Pump solution gives you the security that only a company with a hundred-year history can give you.

### TYPICAL APPLICATIONS

#### RECOMMENDED FOR

- FSRU
- Tankers
- FLNG
- VLCC
- LNG
- FPSO

All our experience becomes your advantage, you can let our guidance and advice help you, when you are out to find the right solution for your vessel. Contact us for further details.

Telephone +45 44 91 67 88